



BIG SAM'S is one of India's fastest growing Premium Seafood & Meats brands. We have strong presence in B2B as well as B2C segment and are preferred suppliers to India's top 5-Star hotel chains & restaurants.

Thanks to our global sourcing capabilities and deep distribution network, we are able to provide our customers with a wide variety of high quality products at competitive prices year-round.

Our products include Norwegian Salmon (organic, raw fillets, smoked, & whole fish), Norwegian Trout, Imported Pork, Antibiotic-free Chicken Range, Prawns, Breaded Fish Fingers, Squid Rings, Tilapia Fish & Basa.

Big Sam's sales network spans across India, with hubs located in all the major metros & tier-2 cities. With a growing network of distributors and retail outlets in over 30 cities, Big Sam's is truly a national brand.

Follow us on:   



PREMIUM SEAFOOD & MEATS

info@bigsams.in

www.bigsams.in

Fresh Salmon

PRODUCT	ORIGIN	SPECS
Salmon (Whole Guttet)	Norway	2-3 kg
Salmon (Whole Guttet)	Norway	3-4 kg
Salmon (Whole Guttet)	Norway	4-5 kg
Organic Salmon (Whole Guttet)	Norway	4-5 kg
Salmon (Whole Guttet)	Scotland	2-3 kg
Salmon (Whole Guttet)	Scotland	3-4 kg
Salmon (Whole Guttet)	Scotland	4-5 kg

Frozen Salmon

PRODUCT	ORIGIN	SPECS
Organic Salmon Fillet	Norway	1.0 - 1.3 kg
Salmon Fillet Trim C	Norway	1.0 - 1.3 kg
Salmon Fillet Trim D	Norway	1.0 - 1.3 kg
Smoked Salmon Fillet	Norway	1.0 - 1.3 kg

Fresh Trout

PRODUCT	ORIGIN	SPECS
Trout (Whole Guttet)	Norway	4-5 kg

Frozen Trout

PRODUCT	ORIGIN	SPECS
Trout Fillet Trim C	Norway	1.0 - 1.3 kg
Trout Fillet Trim D	Norway	1.0 - 1.3 kg





Prawns

PRODUCT	ORIGIN	SPECS
Prawns PDTO 1 kg IQF (20% Glaze)	India	8-12 pcs/lb
Prawns PDTO 1 kg IQF (20% Glaze)	India	13-15 pcs/lb
Prawns PDTO 1 kg IQF (20% Glaze)	India	16-20 pcs/lb
Prawns PDTO 1 kg IQF (20% Glaze)	India	21-25 pcs/lb
Prawns PDTO 1 kg IQF (20% Glaze)	India	31-40 pcs/lb
Prawns PDTO 1 kg IQF (20% Glaze)	India	41-50 pcs/lb
Prawns PDTO 1 kg IQF (NWNC)	India	16-20 pcs/lb
Prawns PDTO 1 kg IQF (NWNC)	India	21-25 pcs/lb
Prawns PDTO 1 kg IQF (NWNC)	India	31-40 pcs/lb
Prawns PDTO 1 kg IQF (NWNC)	India	41-50 pcs/lb

Squid

PRODUCT	ORIGIN	SPECS
Squid Ring 1 kg (20% Glaze)	India	60 up pcs/lb
Squid Tube 1 kg (20% Glaze)	India	20-40 pcs/lb

Tilapia

PRODUCT	ORIGIN	SPECS
Tilapia Fillets 1 kg (20% Glaze)	India	10-14 pcs/kg

Lobster

PRODUCT	ORIGIN	SPECS
Lobster (Whole)	India	> 500 g



Basa

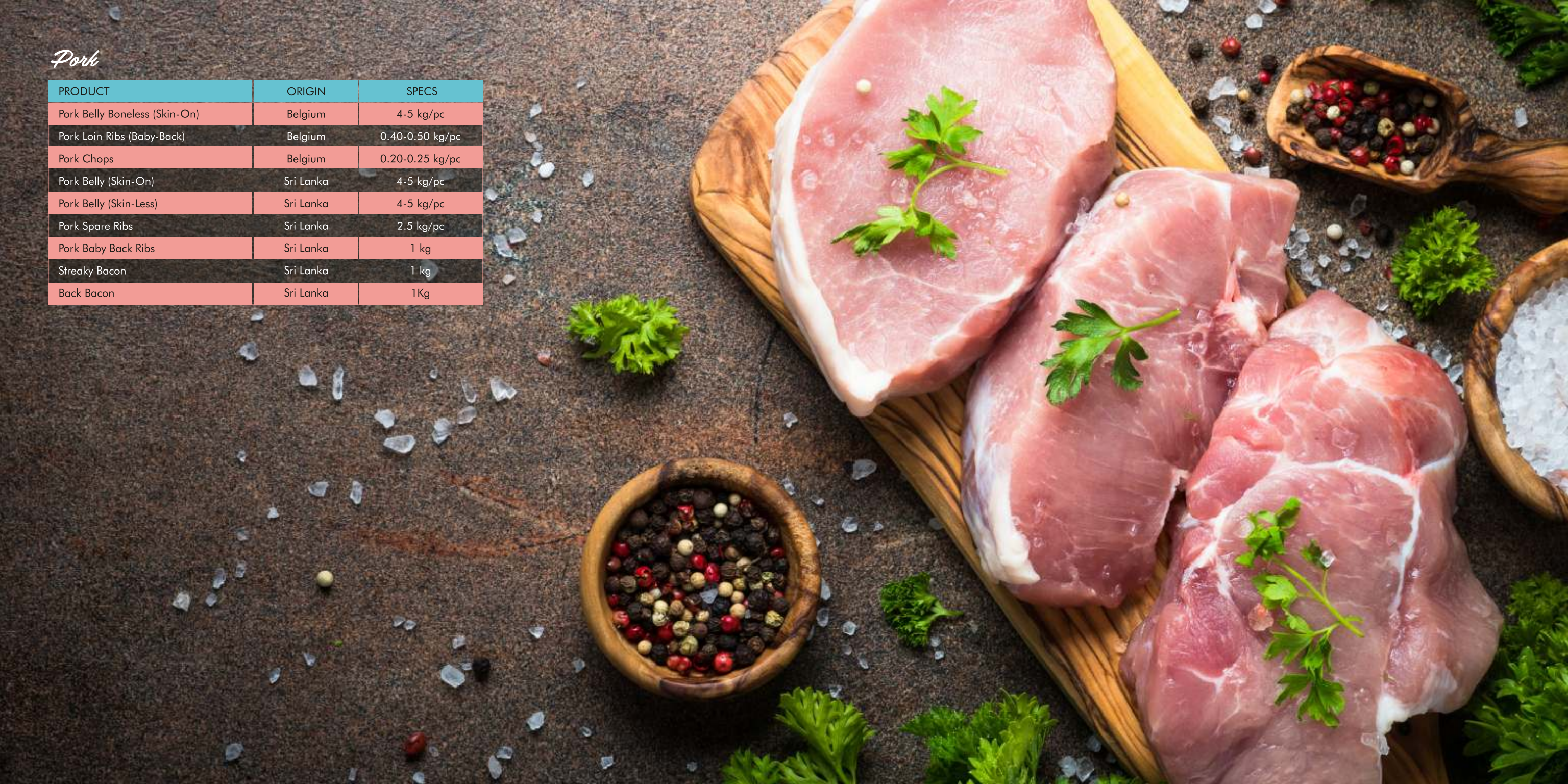
PRODUCT			ORIGIN	SPECS
Basa Fillets Platinum	(25% Glaze)		Vietnam	2 pcs/kg
Basa Fillets Platinum	(25% Glaze)		Vietnam	3 pcs/kg
Basa Fillets Diamond	(45% Glaze)		Vietnam	2 pcs/kg
Basa Fillets Diamond	(45% Glaze)		Vietnam	3 pcs/kg
Basa Fillets Untrimmed	(45% Glaze)		Vietnam	2 pcs/kg
Basa Fillets Untrimmed	(45% Glaze)		Vietnam	3 pcs/kg
Indian Basa Fillets	2 kg (20% Glaze)		India	8-12 pcs/pack
Indian Basa Fillets	2.5 kg (20% Glaze)		India	8-12 pcs/pack
Indian Basa Fillets	5 kg (20% Glaze)		India	8-12 pcs/pack
Indian Basa Fillets	5 kg (20% Glaze)		India	5-7 pcs/pack

Breaded

PRODUCT			ORIGIN	SPECS
Breaded Fish Fingers			India	1 kg
Breaded Fish Nuggets			India	1 kg

Pork

PRODUCT	ORIGIN	SPECS
Pork Belly Boneless (Skin-On)	Belgium	4-5 kg/pc
Pork Loin Ribs (Baby-Back)	Belgium	0.40-0.50 kg/pc
Pork Chops	Belgium	0.20-0.25 kg/pc
Pork Belly (Skin-On)	Sri Lanka	4-5 kg/pc
Pork Belly (Skin-Less)	Sri Lanka	4-5 kg/pc
Pork Spare Ribs	Sri Lanka	2.5 kg/pc
Pork Baby Back Ribs	Sri Lanka	1 kg
Streaky Bacon	Sri Lanka	1 kg
Back Bacon	Sri Lanka	1Kg



Antibiotic-Free Chicken

PRODUCT	ORIGIN	SPECS
Chicken Breast Boneless	India	500g
Chicken Drumsticks	India	500g
Chicken Leg Boneless	India	500g
Chicken Mince	India	500g
Chicken Curry Cut	India	1 kg

